

DRAWING NO.
SD046623

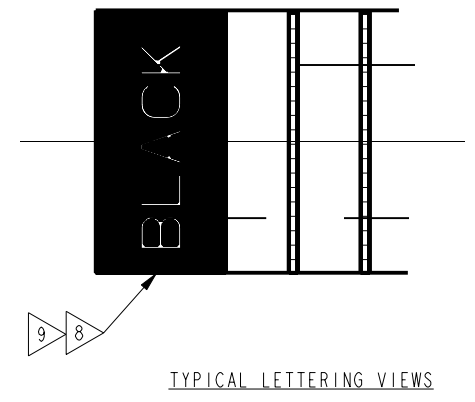
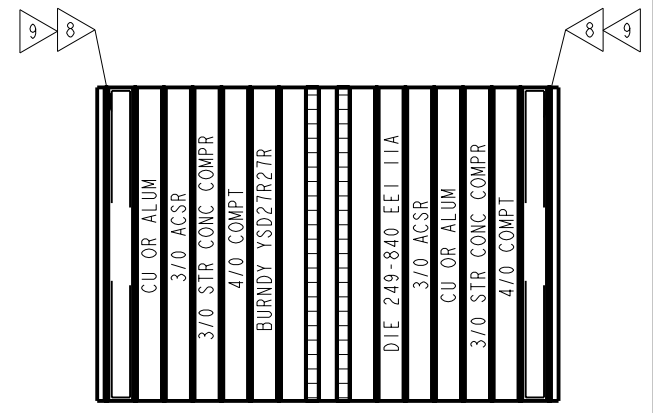
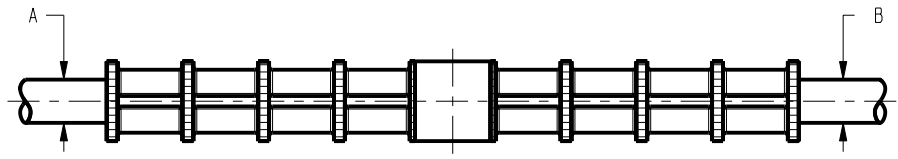
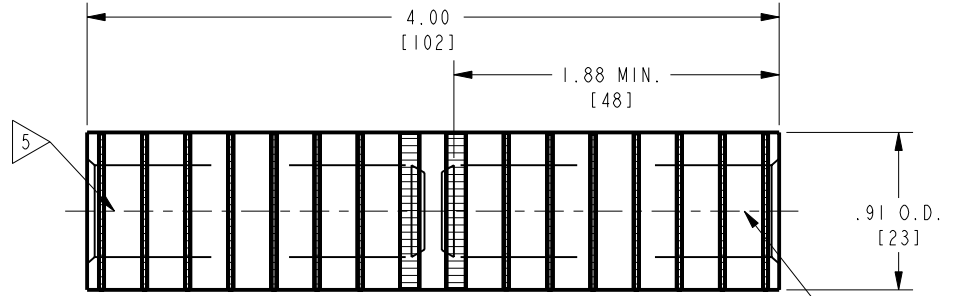
CATALOG NUMBERS	ACSR		ALUMINUM & COPPER	ALUMINUM COMPACT	ACSR		ALUMINUM & COPPER	ALUMINUM COMPACT	COLOR CODE	
	SIZE	STR.			SIZE	STR.			A	B
YSD28R2R	4/0 (.563)	6-1 19	4/0 STR (.522) 4/0 STR (.528)	300 kcmil (.570)	#2 (.316)	6-1	#1 STR (.328)	1/0 (.336)	PINK	RED
YSD28R25R					#2 (.325)	7-1	#2 STR (.292)			YELLOW
YSD28R26R					1/0 (.398)		1/0 STR (.368)	2/0 (.376)		GRAY
YSD28R27R					2/0 (.447)	6-1	2/0 STR (.414)	3/0 (.423)		BLACK
YSD28R28R					3/0 (.502)		3/0 STR (.464)	4/0 (.475)		PINK
YSD28R28RG2					4/0 (.563)	4/0 STR (.522)	300 kcmil (.570)	300 kcmil (.570)		PINK
YSD26R2W	2/0 (.447)		2/0 STR (.414) 2/0 STR (.419)	3/0 (.423)	GRAY	ORANGE				
YSD28R2W	4/0 (.563)		4/0 STR (.522) 4/0 STR (.528)	300 kcmil (.570)	#4 (.250) #4 (.257)		6-1 7-1	#3 #4 STR (.260) #2 SOL (.258)	#2 (.268)	
YSD27R2W	3/0 (.502)		3/0 STR (.464) 3/0 STR (.470)	4/0 (.475)					BLACK	
YSD26R4W	2/0 (.447)		2/0 STR (.414) 2/0 STR (.419)	3/0 (.423)	#6 (.198)		6-1	#5 #6 STR (.206) #4 SOL (.204)	#4 (.213)	GRAY

REV	DATE	DESCRIPTION	ECO	BY	C'H'K.
A	8/29/2009 12:00:00 PM	REDRAWN TO PROE	17955	IA	MA

INSTALLATION TOOLING (# CRIMPS)									
DIE INFORMATION		TYPE	MECHANICAL			HYDRAULIC			
EET DIE INDEX	DIE INDEX		OUR840	MD6 MD7	Y35, Y39, Y750, BAT35, BAT750	Y46	Y45	Y48B	Y60BHU
I1A (4)	249	DIE SET	X249 (8)	W249 (8)	U249 (2)	U249 (2)	C249 (2)	C249 (1)	L249 (1)
----	K840	DIE SET	X840 (7)	WK840 (7)	UK840T (4)	UK840T (4)	UK840T (4)	----	----

NOTES:

- MATERIAL: ALUMINUM.
- FINISH: NO FINISH REQUIREMENTS.
- CATALOG NO. PT6515 ADAPTER IS REQUIRED TO USE "U" DIES IN Y45 SERIES TOOLS.
- CATALOG NO. PUADP-1 ADAPTER IS REQUIRED TO USE "U" DIES IN Y46 SERIES TOOLS.
- BARRELS PARTIALLY FILLED WITH PENETROX™ AND PACKAGED IN POLYBAG.
- SCRATCH BRUSHING OF ALUMINUM CONDUCTORS DRY IS RECOMMENDED BEFORE MAKING INSTALLATION.
- DIMENSIONS IN BRACKETS [] ARE IN MILLIMETERS ROUNDED OFF TO THE NEAREST MILLIMETER, UNLESS OTHERWISE NOTED, AND ARE FOR REFERENCE ONLY.
- COLOR NAME TO BE MARKED IN COLOR BAND AS SHOWN. SEE TABLE ABOVE FOR APPROPRIATE COLOR NAME.
- CATALOG NO. YSD28R28RG2 REQUIRES COLOR CODED CAPPLUGS (SEE TABLE) INSTEAD OF COLOR BANDS ON ENDS.



LINKIT™ (ALUMINIUM) SPECIAL			
ITEM NO:	--		
CAT. NO:	YSD-R-R, & YSD-R-W (TABLE)		
DRAWN BY:	BAL	07/20/60	
CHECKER:	E.P.G	07/22/60	
DSN APPVL:	C.CHADBOURNE	07/11/96	
MFG APPVL:	--	--	
QA APPVL:	J.BRODEUR	07/15/96	
MKT APPVL:	R.PELLITIER	07/12/96	
PROD FAM:	--	DRAWING NO	REV
PROJECT #:	--	SD046623	A
DOCUMENT TYPE:	Sales	SHEET 2 OF 2	
REL LEVEL:	Released		

REV: PE0200